

Mary (Craighead) Tyler, AICP

A graphic of a black asphalt road with white dashed lines, curving from the bottom left towards the top right of the slide.

Will County Transportation Needs

A Higher Road for a Better Tomorrow

ILLINOIS ECONOMIC POLICY INSTITUTE

ILEPI

A Growing Region

2000-2010 Population Growth

35% **Will County**

4% **7-County
Chicago
Region**

175% **Minooka**

103% **Shorewood**

71% **Channahon**

39% **Joliet**

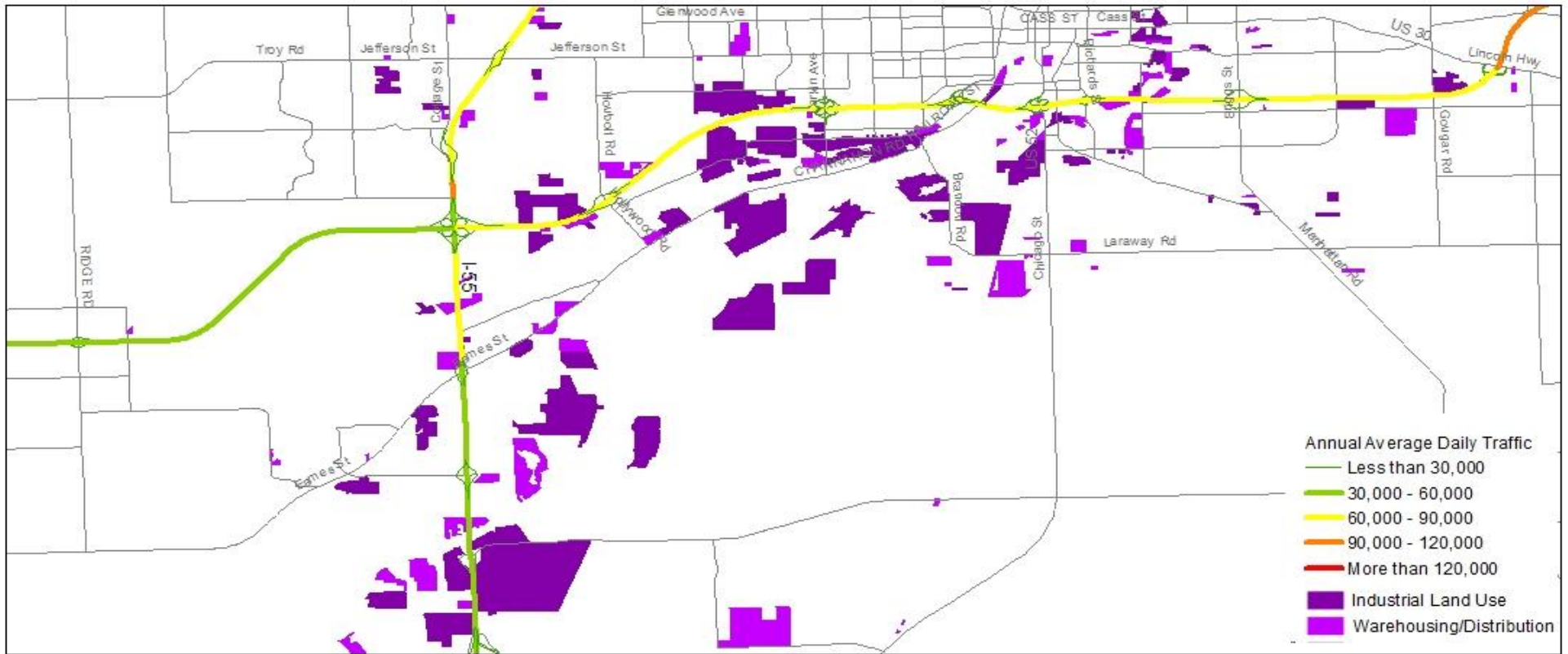
37% **New Lenox**

29% **Mokena**

Industrial Development, 2001



Industrial Development, 2005

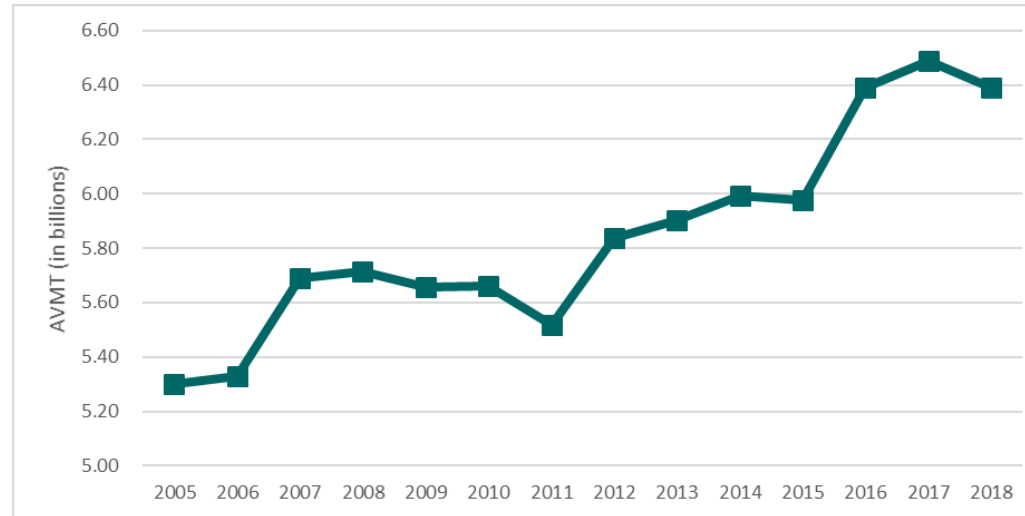


Industrial Development, 2013



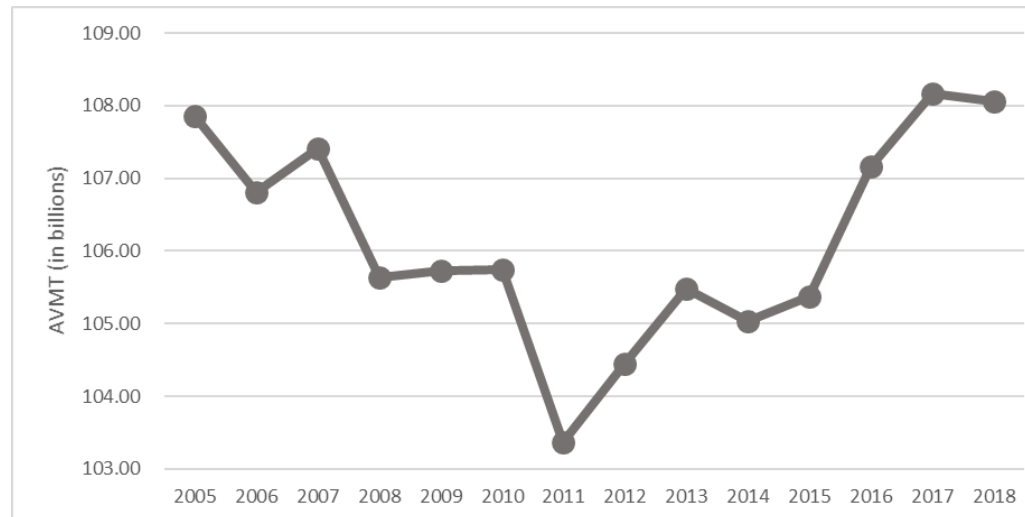
Traffic Growth 2005-2018

**Will
County**



**Growth
1.09 billion
21%**

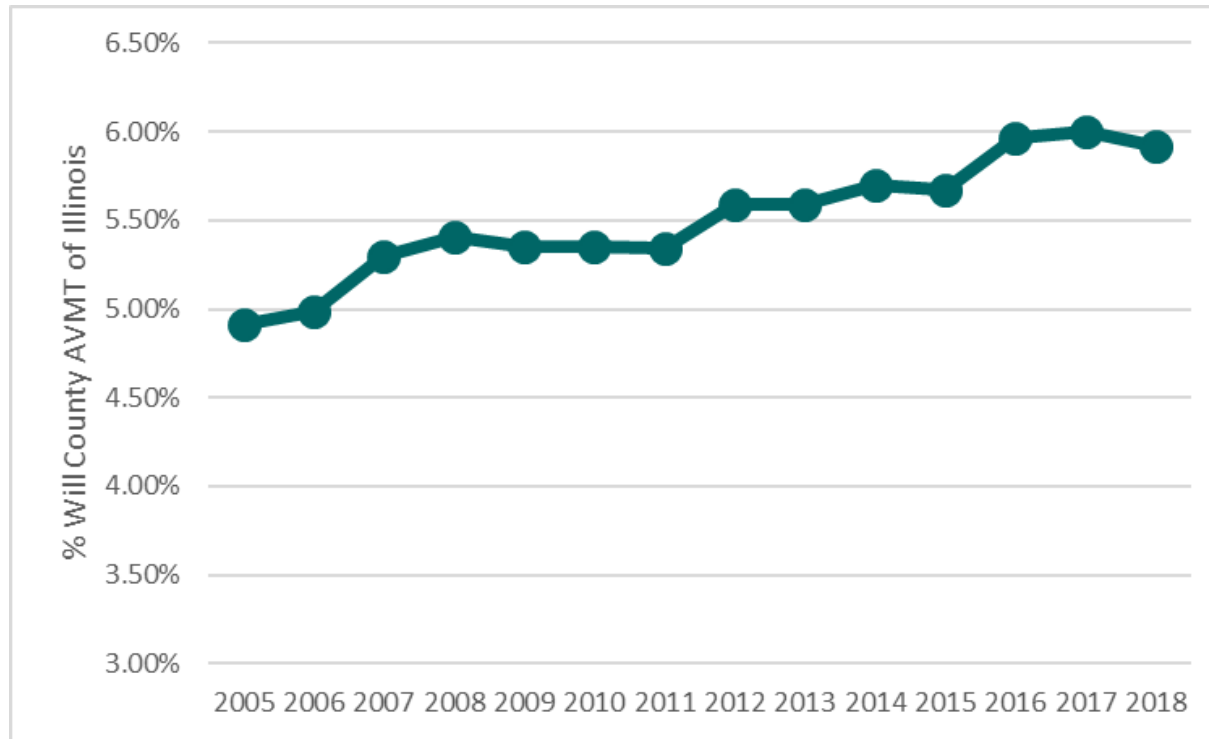
Illinois



**Growth
204 million
0.19%**

Traffic Growth 2005-2018

Will County AVMT as % of Illinois AVMT



4.91% to 5.91%

Future Growth

Future Population Growth

2015-2025

14% **Will County**

9% **7-County
Chicago
Region**

2015-2050

56% **Will County**

27% **7-County
Chicago
Region**

Future Employment Growth

2015-2025

19% **Will County**

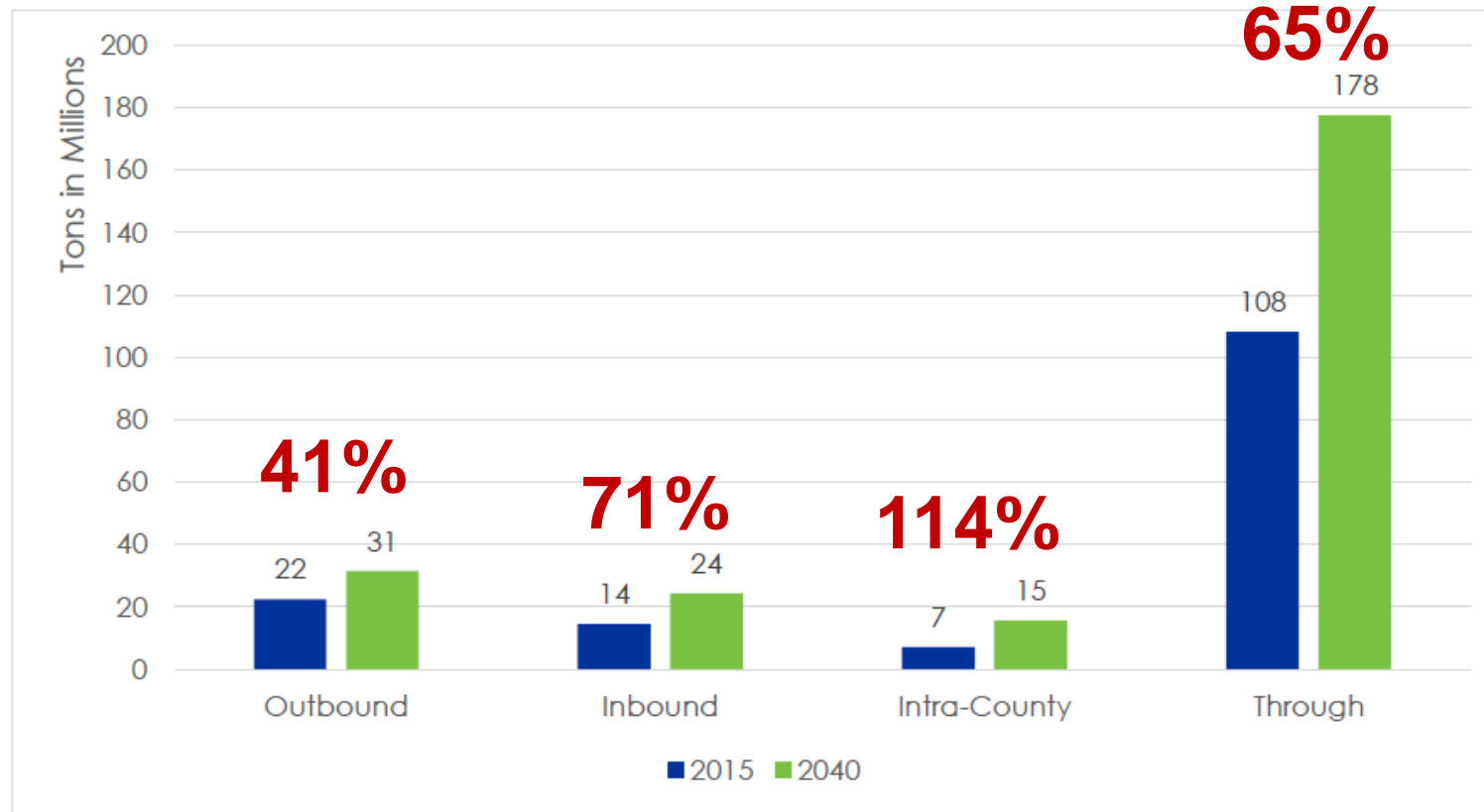
6% **7-County
Chicago
Region**

2015-2050

77% **Will County**

22% **7-County
Chicago
Region**

Future Traffic Growth



Source. Prepared by CDM Smith, based on TRANSEARCH® data for 2015 and 2040

**Truck Forecast, 2015-2040 – as shown
in Will County Freight Plan**

Moving Forward

Mary (Craighead) Tyler, AICP

Transportation Policy Analyst

Illinois Economic Policy Institute

mtyler@illinoisepi.org

708.375.1002 x2