

# Mary Craighead, AICP

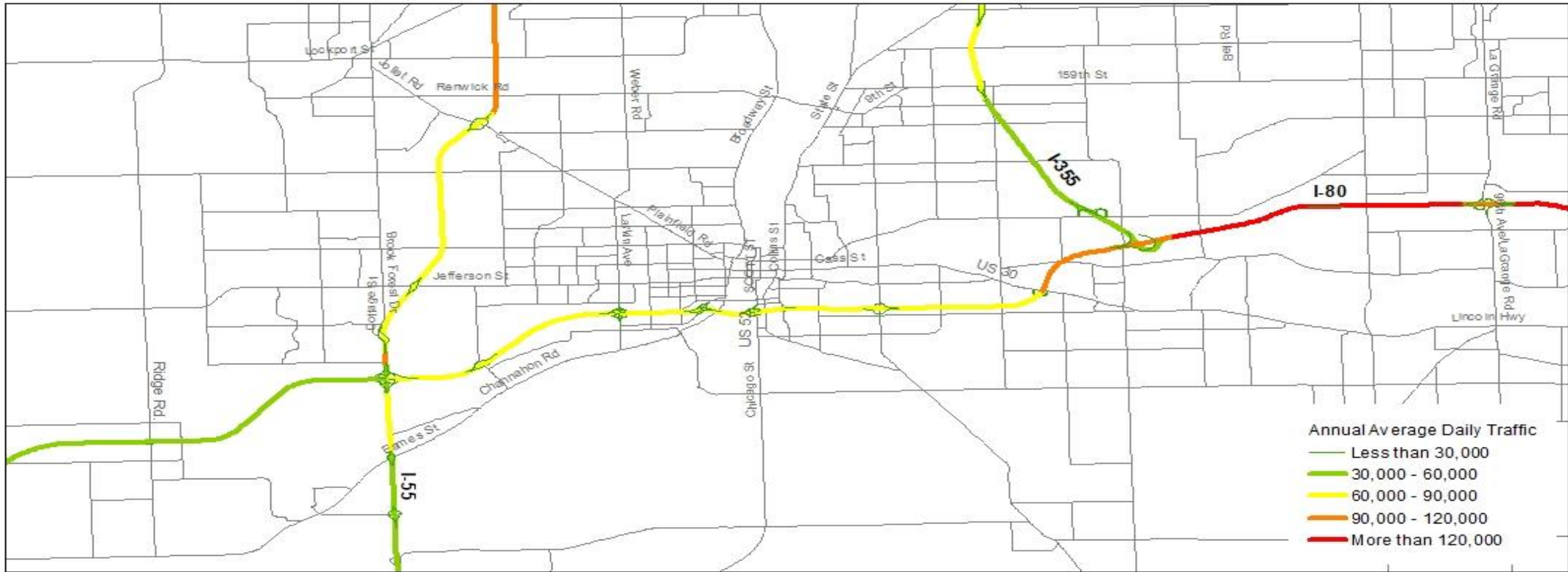


# I-80 Corridor Analysis

---

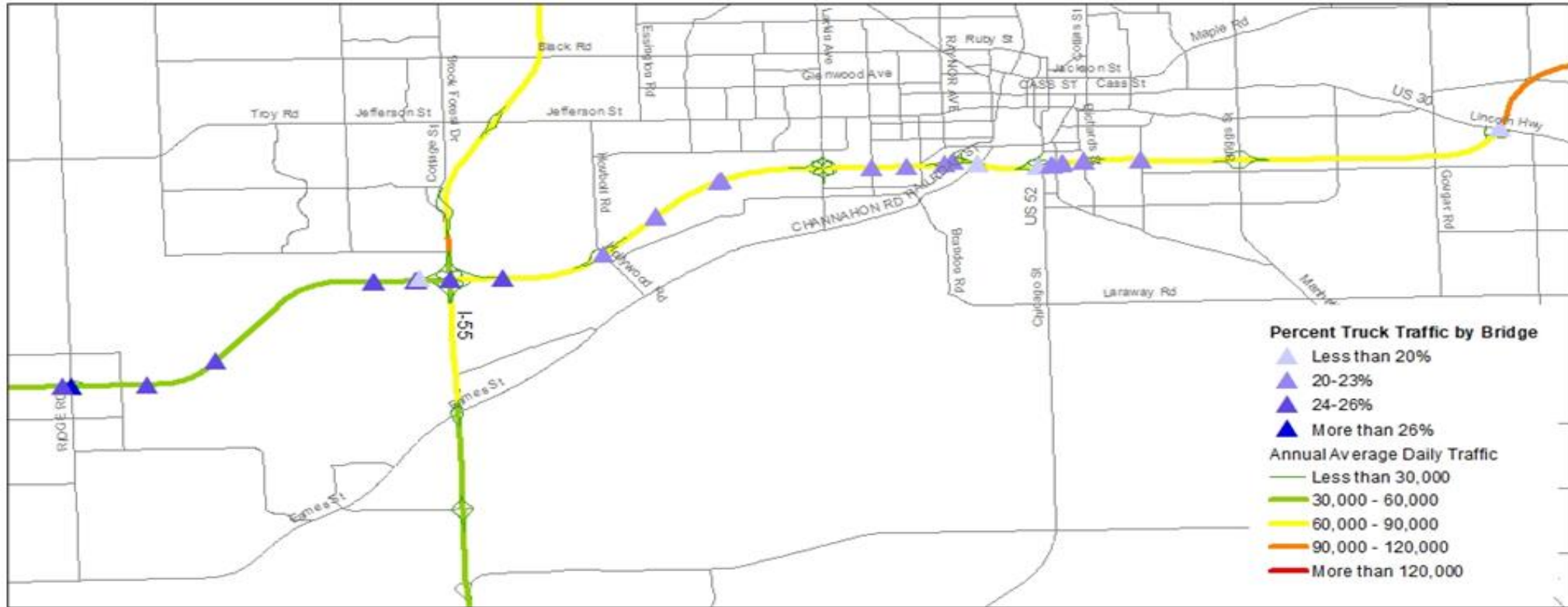
# Road & Bridge Conditions

# Traffic Volumes



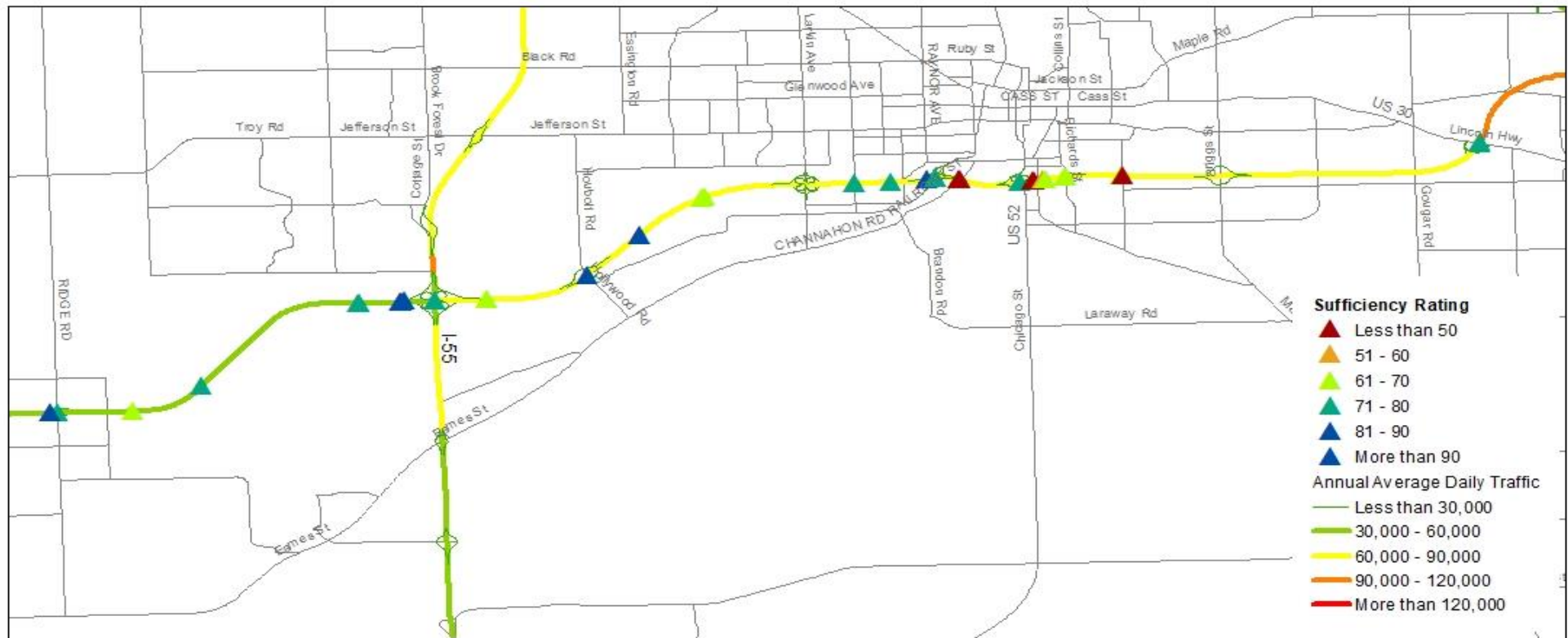
**Traffic volumes increase approaching the east**

# Truck Volumes



**Approximately 20 percent of total traffic volumes are comprised of trucks**

# Bridge Conditions

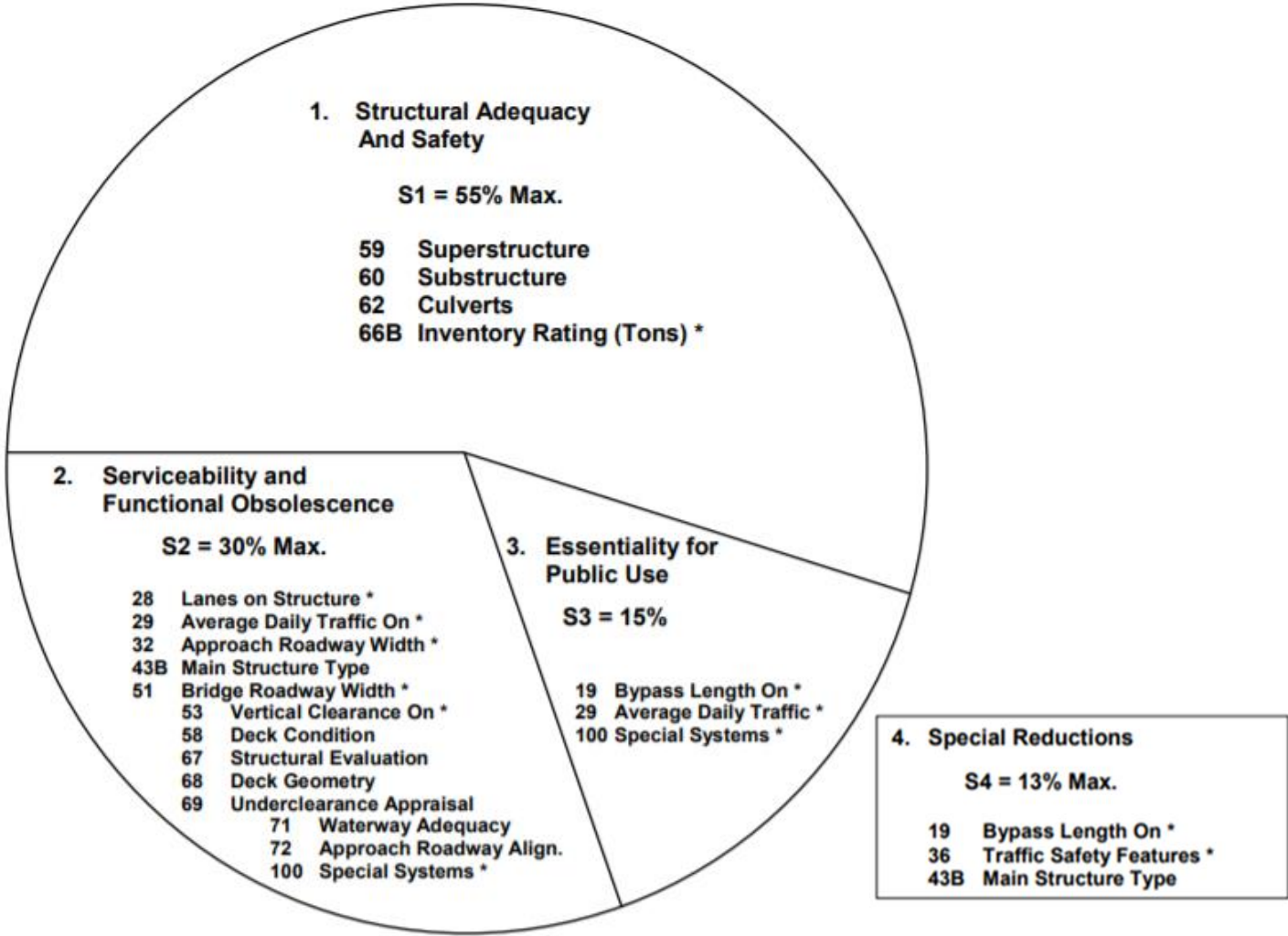


**26% of bridges are “structurally deficient”**

# Sufficiency Ratings

**Sufficiency Rating = S1 + S2 + S3 – S4**

**Sufficiency Rating shall not be less than 0% nor greater than 100%**



# Sufficiency Ratings

Cross Street	Direction	Sufficiency Rating	Structurally Deficient	Avg Daily Traffic	% Truck
Des Plains River & US-6	WB	6.0	Yes	42,700	18%
Des Plains River & US-6	EB	7.4	Yes	42,700	18%
Rowell Ave.	WB	27.9	Yes	35,550	23%
RR & Gardner St	WB	36.0	Yes	36,900	23%
RR & Gardner St	EB	34.6	Yes	36,900	23%
Midland Ave.	WB	49.0	Yes	34,750	21%

Source: IDOT Bridge Information System

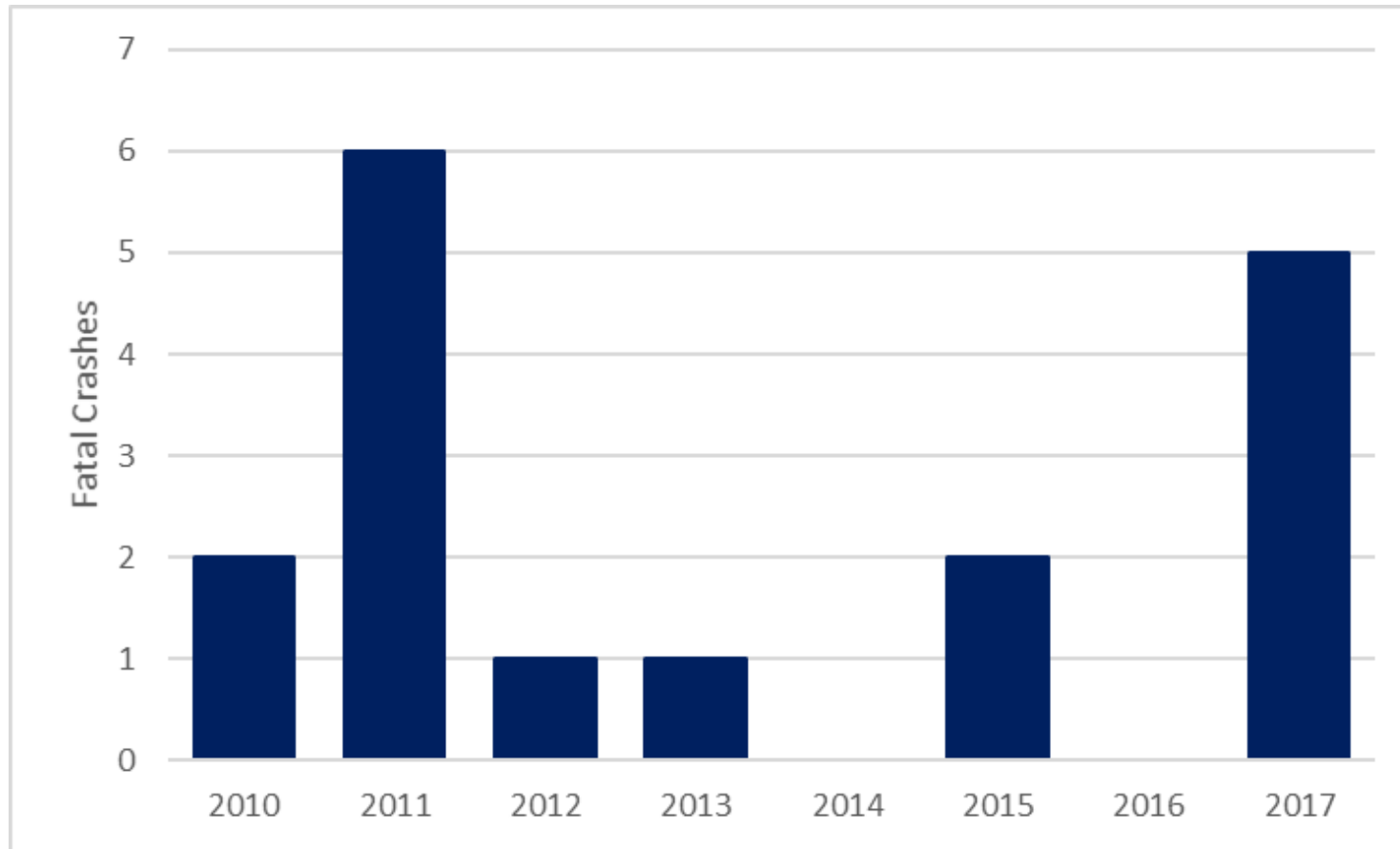
---

# Safety Concerns



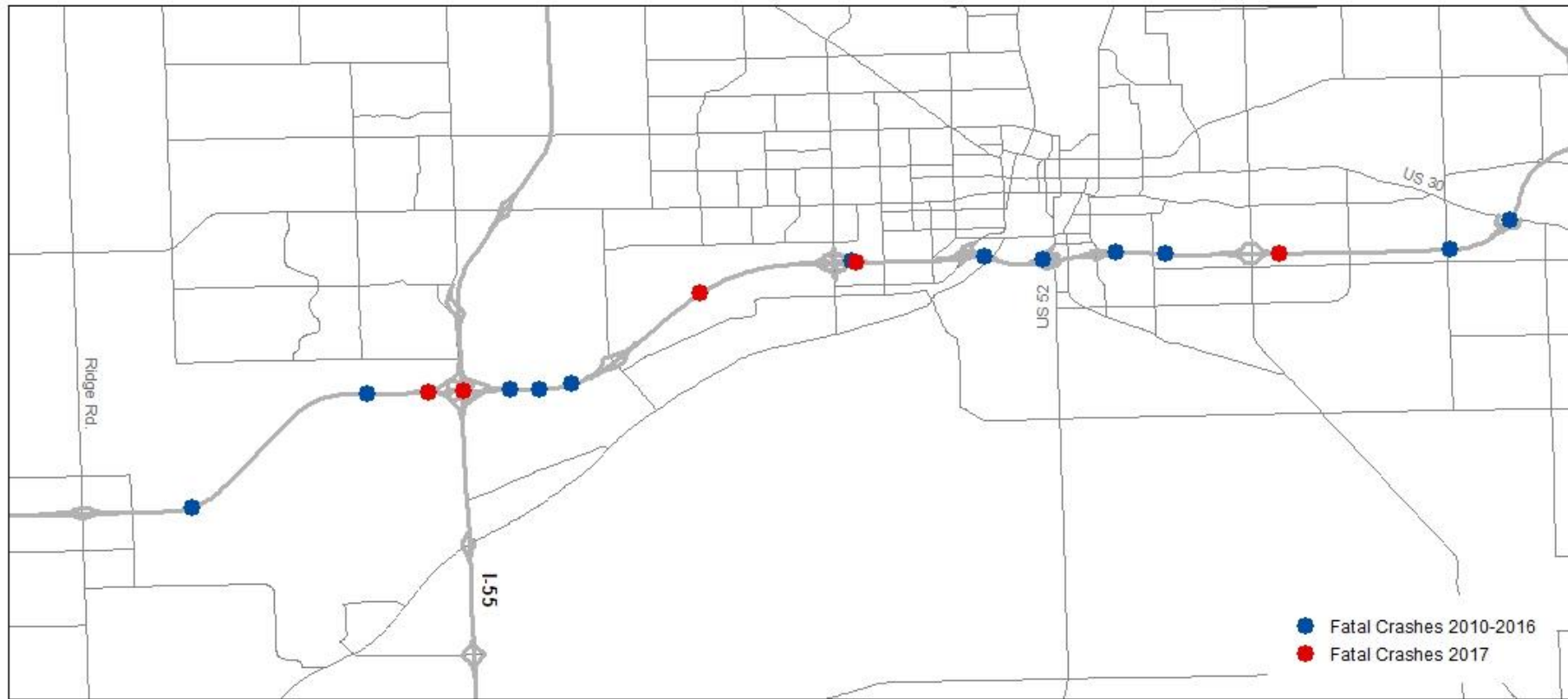
# Fatal Crashes

## Ridge Road to US 30



# Fatal Crashes

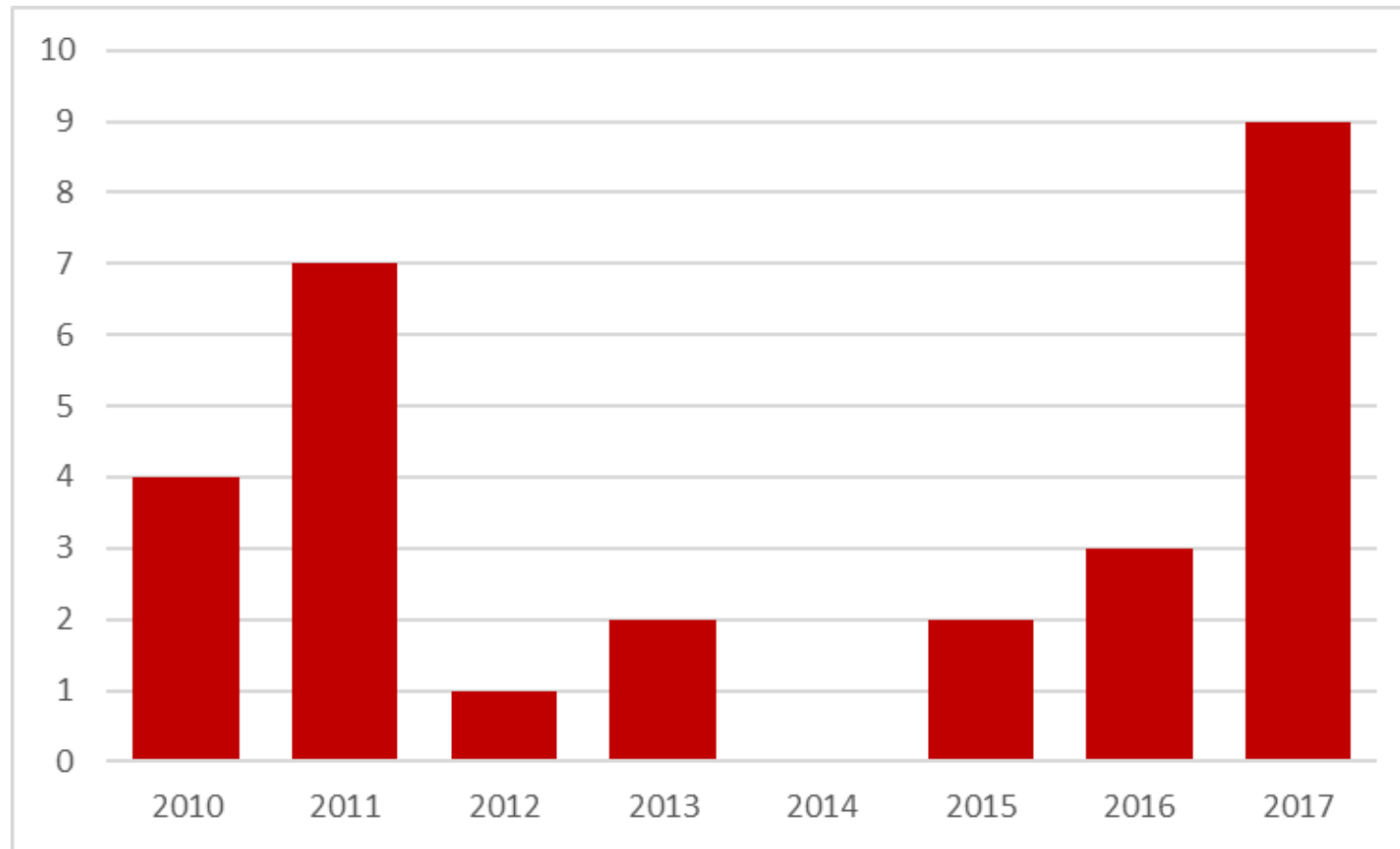
## Ridge Road to US 30



**17 fatal crashes between 2010 and 2017**

# Fatal Crashes

## Route 47 to I-294



# Fatal Crashes

## Route 47 to I-294



**28 fatal crashes between 2010 and 2017**

---

# Recent Crashes

**Patch**

May 9, 2018 4:51 pm ET

**I-80 Joliet Has 6-Car Pileup:  
State Police**

**CHICAGO SUN★TIMES**

08/22/2018, 01:51pm

**Investigators seek details in  
fatal I-80 crash in Joliet**



OCTOBER 3, 2018,

**Crash involving semi, motorcycle causing back-ups on  
eastbound I-80**

A Higher Road for a Better Tomorrow

ILLINOIS ECONOMIC POLICY INSTITUTE

**ILEPI**

---

---

# Recent Crashes

**The HERALD-NEWS** Oct. 16, 2018

## I-80 multi-vehicle crash stops westbound traffic



Nov 6, 2018 @ 6:56 AM

## Single Vehicle Fatal Crash On I-80 In Joliet

**The HERALD-NEWS** Jan. 27, 2019

## Minooka woman killed in I-80 crash

---

# Mary Craighead, AICP

**Transportation Policy Analyst**

**Illinois Economic Policy Institute**

**[www.Illinoisepi.org](http://www.Illinoisepi.org)**

**[mcraighead@illinoisepi.org](mailto:mcraighead@illinoisepi.org)**

**708.375.1002 x2**